

# State of Wyoming Corner Record

(In compliance with the *CORNER PERPETUATION AND FILING ACT*, Wyoming Statutes, 1997, Section 33-29-140, et seq., and the Rules and Regulations of the Board of Registration for Professional Engineers and Professional Land Surveyors)

Reverse side of this form may be used if more space is needed.

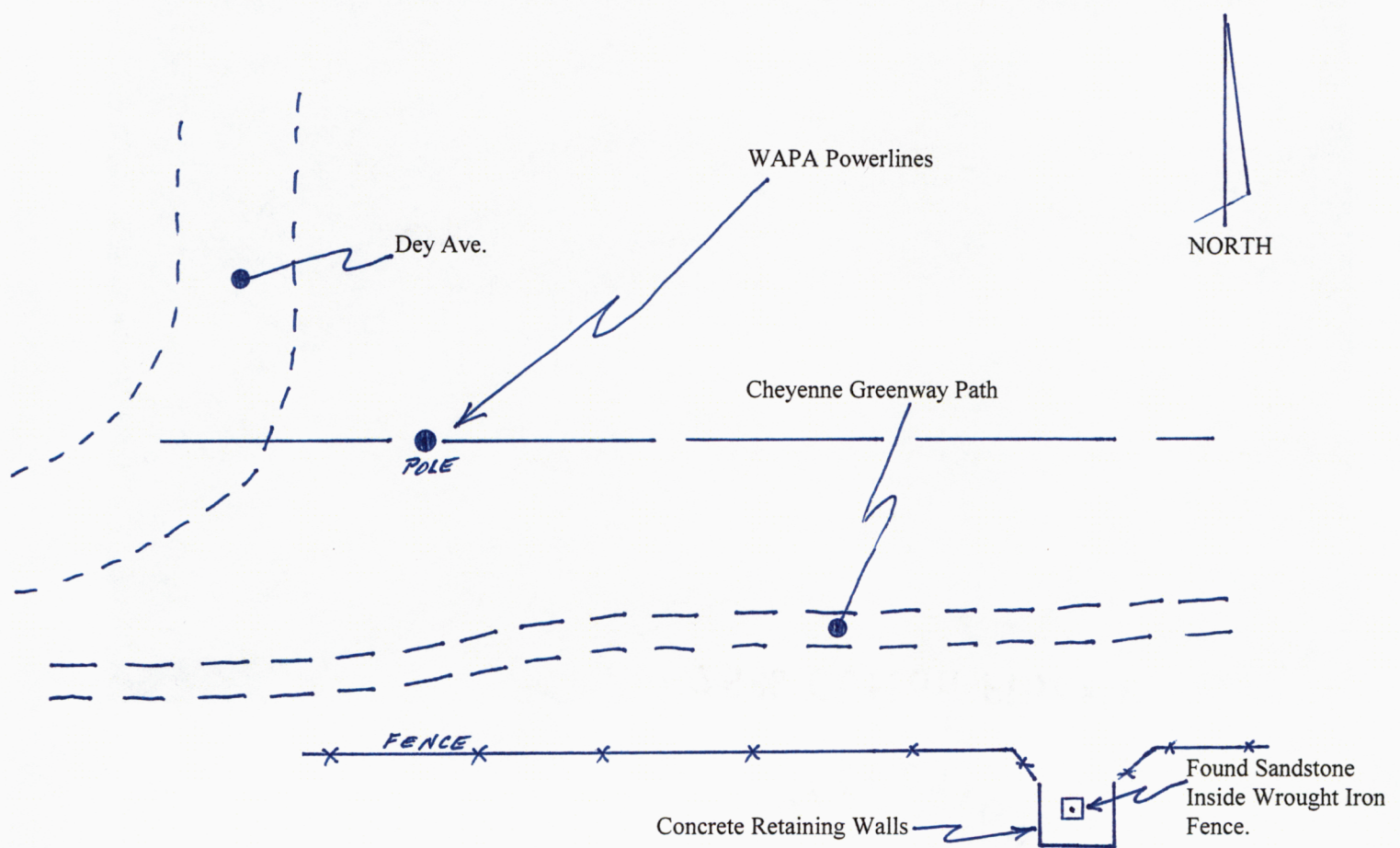
Record of original survey and citation of source of historical information (if corner is lost or obliterated). Description of corner monumentation evidence found and/or monument and accessories established to perpetuate the location of this corner. Sketch of relative location of monument, accessories, and reference points with course and distance to adjacent corner(s) (if determined in this survey). Method and rationale for reestablishment of lost or obliterated corner.

**The Original City of Cheyenne survey completed by Fred Bond, City Engineer in April and May, 1890, recorded in the office of the County Clerk and Recorder of Laramie County, Wyoming, on June 16, 1890, and recorded in Book 40, Page 190. Pursuant to an Ordinance of the City Council dated March 18, 1890; in compliance with the provisions of an Act of the Eleventh Legislative Assembly of the Territory of Wyoming entitled "An act concerning the location of the boundaries, and providing for the extension of the limits of cities and towns, approved March 14 A.D. 1890".**

**RECORD:** SOUTHWEST CORNER - Per review and approval of the field notes as recorded in Cheyenne City - Ordinance Book 2, Pages 376 - 380; "set a Sandstone 12"x14"x36", eighteen inches in the ground and marked 'Cheyenne City' in a plain and permanent manner on the south face."

**FOUND** - Original stone monument. SEE - SURVEYOR'S REPORT on following pages.

See RECORD OF SURVEY recorded in the Laramie County Clerk's Office under Reception No. 606184 in Bk. 2313, Pg. 41.



Date of Field Work: Dec. 2012 Office Reference: \_\_\_\_\_

### CROSS INDEX DIAGRAM

1	2	3	4	5	6	7	8	9	10	11	12	13	14	15	16	17	18	19	20	21	22	23	24	25		
A																									A	
B																									B	
C	6		5		4		3		2		1														C	
D																										D
E																										E
F	7		8		9		10		11		12															F
G																										G
H																										H
J																										J
K																										K
L	18		17		16		15		14		13															L
M																										M
N																										N
O																										O
P	19		20		21		22		23		24															P
Q																										Q
R																										R
S																										S
T	30		29		28		27		26		25															T
U																										U
V																										V
W																										W
X	31		32		33		34		35		36															X
Y																										Y
Z																										Z

Land Surveyor / Firm / Address

**John J. Studley, LS No. 4828**

**City of Cheyenne, City Surveyor**

**2101 O'Neil Ave., Room 206**

**Cheyenne, Wyoming 82001**

Telephone: **307-637-6274**

This corner record was prepared by me or under my direction and supervision.  
SEAL & SIGNATURE



Corner Name: **Southwest corner - Original City of Cheyenne located in the center of NW ¼ of** Section: 7 T 13 N . R 66 W : 6<sup>th</sup> P.M. Cross-Index No.: +/- F2 SBRPEPLS/PLSW: March 1994; PLSW January 1998



## SURVEYOR'S REPORT

**S.W. CORNER - BOND SURVEY OF 1890** - The southwesterly corner of the Bond Survey of 1890 is a well set stone that has been preserved with a 15 foot square parcel surrounded with concrete retaining walls and a surrounding concrete pad within a wrought iron fence enclosure. This preservation was done as a joint project between the Laramie County Chapter of the Wyoming Historical Society and Southeast Chapter of the Professional Land Surveyors of Wyoming, and is an excellent example of a joint historical preservation project. A Historical Sign is posted on the wrought iron fence explaining the origin and history of the stone monument. This corner appears to be as originally set by Fred Bond in 1890, with the top of the stone chiseled to make a two line intersection for the true point, which now has a Philips head screw (origin unknown) set at the intersection point.

